



Cannon Hill NW6

Parkheath  
*Sold on Service*





## **Cannon Hill, NW6**

### **£1,500,000**

### **Share of Freehold**

- Rarely available 4 bedroom mansion apartment
- Set within the prestigious BAM estate
- Classic lateral layout on the raised ground floor
- 1864 sq ft / 173.21 sq m
- Opportunity to create wonderful home
- Superb well maintained communal gardens
- Use of external storage cupboard
- Within 10 minute walk to West Hampstead transport hub (Jubilee, Thameslink and Overground)
- Chain free
- EPC: Energy Rating C



**Parkheath**  
*Sold on Service*

**Camden Tax band G**

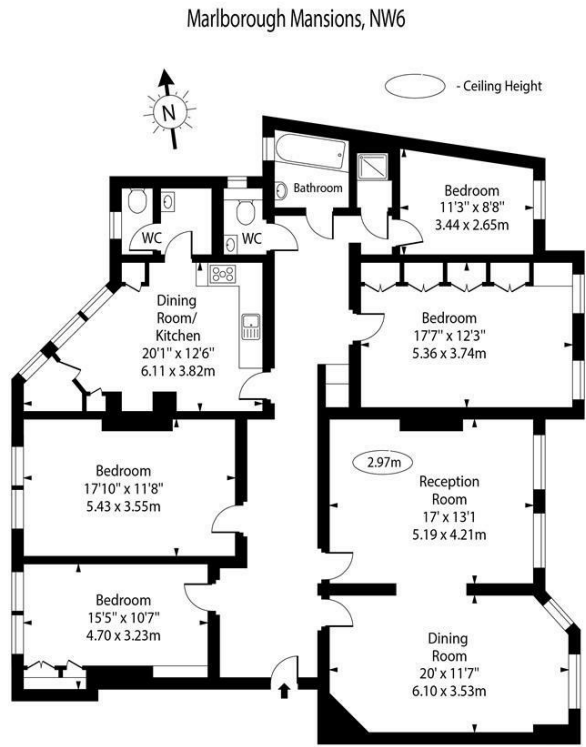
Belsize Park/Hampstead  
208 Haverstock Hill  
NW3 2AG  
Sales 020 7431 1234  
Lettings 020 7431 3104  
[nw3@parkheath.com](mailto:nw3@parkheath.com)

South/West Hampstead  
192 West End Lane  
NW6 1SG  
Sales & Lettings  
Tel 020 7794 7111  
[192@parkheath.com](mailto:192@parkheath.com)

Kensal Rise  
54-56 Chamberlayne Rd  
NW10 3JH  
Tel 020 8960 4845  
[kensal@parkheath.com](mailto:kensal@parkheath.com)

Property Management  
192 West End Lane  
NW6 1SG  
020 7433 6174  
[pm@parkheath.com](mailto:pm@parkheath.com)

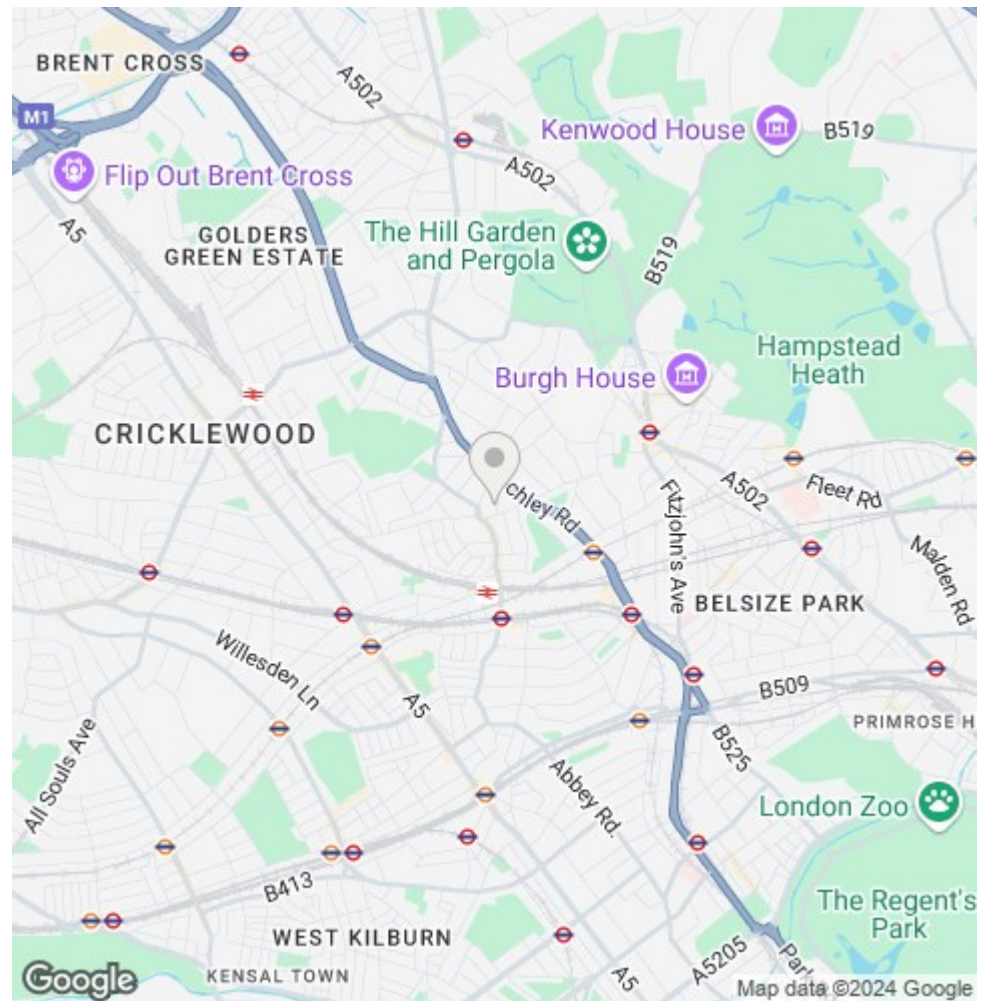
[www.parkheath.com](http://www.parkheath.com)



Raised Ground Floor

Approx Gross Internal Area 1864 Sq Ft - 173.21 Sq M

For Illustration Purposes Only - Not To Scale Floor Plan by www.nogaphotostudio.com Ref: No.49710  
 This floor plan should be used as a general outline for guidance only. Any intending purchaser or lessee should satisfy themselves by inspection, searches, enquiries and full survey as to the correctness of each statement. Any areas, measurements or distances quoted are approximate and should not be used to value a property or be the basis of any sale or let.



The particulars do not constitute part of an offer or contract. The particulars, including text, photographs and plans, are for the guidance only of prospective purchasers/tenants and must not be relied upon as statements of fact. The descriptions provided therein represent the opinion of the author and whilst given in good faith should not be construed as statements of fact. Nothing in these particulars shall be deemed a statement that the property is in good condition or otherwise or that any services or facilities are in good working order. All measurements are approximate